

Intelligent Technologies And Design

about us
services
current projects
finished projects
contact us

How To Make The Best Possible Decision About Your **Building Envelope Project** And Go From Good To Great?

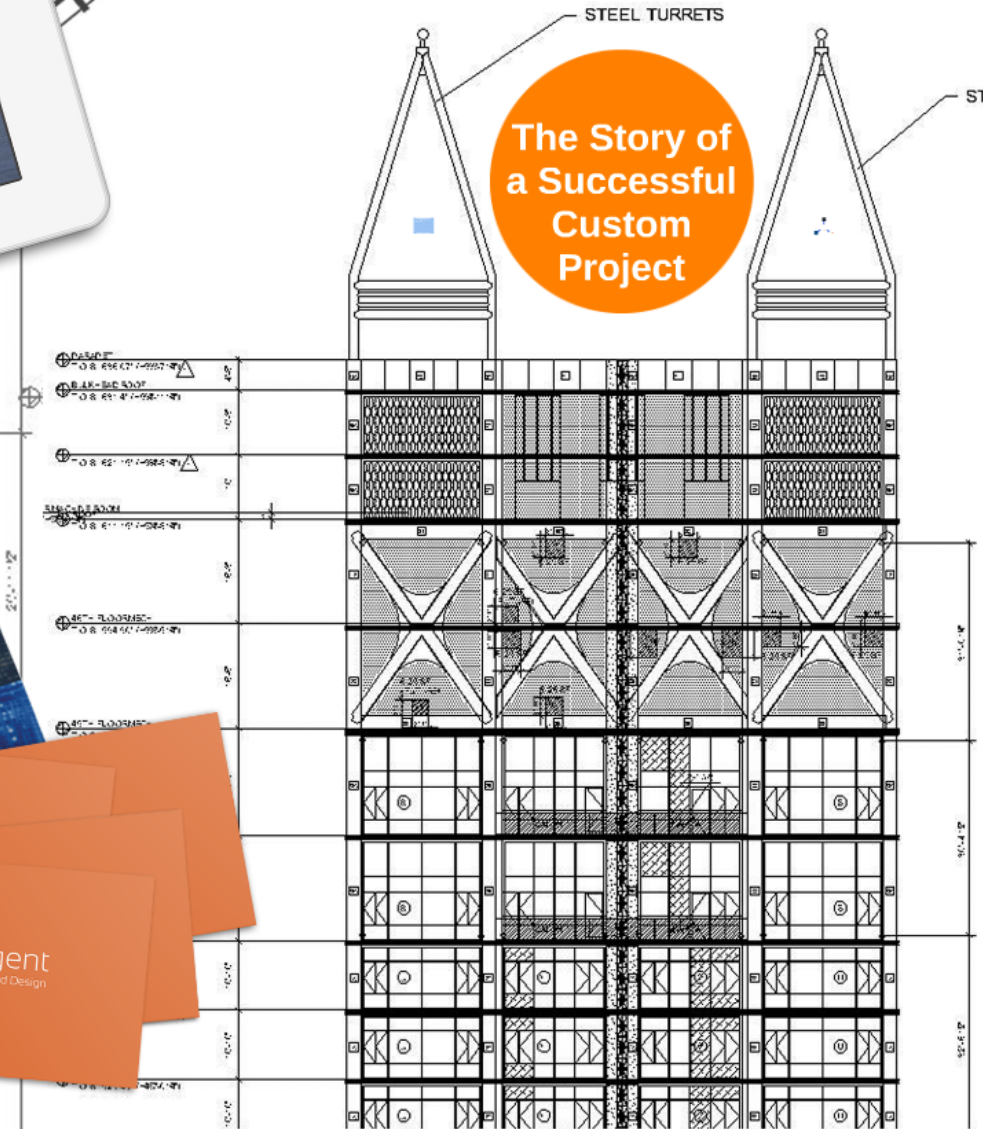


Intelligent Technologies And Design

The Story of a Successful Custom Project

STEEL TURRETS

STEEL TURRETS





about us
services
current projects
finished projects
contact us


Intelligent Technologies And Design




© 2015
Intelligent Technologies And Design

ITD is a **building envelope** design, engineering, and consulting studio.

System manufacturers,
glass suppliers,
designers, and installers
hire us for 3 main
reasons:



System manufacturers,
glass suppliers,
designers, and installers
hire us for 3 main
reasons:



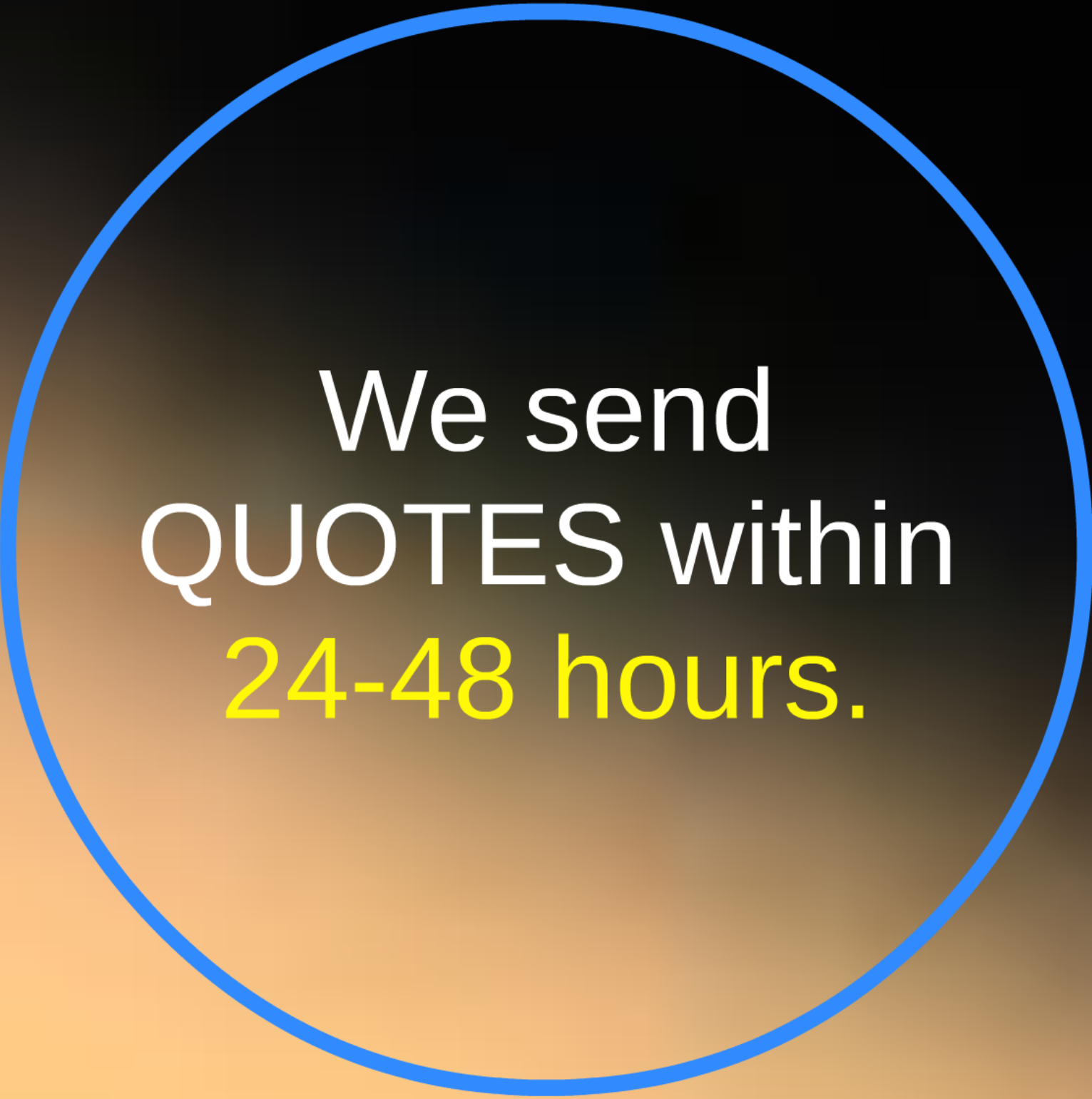
We get
custom
projects
done...



...at a very
competitive
price...

..and we
deliver them
fast.





We send
QUOTES within
24-48 hours.



We finish most
custom PROJECTS
within 2-4 weeks.

ITD is a **building envelope** design, engineering, and consulting studio.

We get **custom** projects done...

...at a very **competitive** price...

..and we deliver them **fast.**



about us
services
current projects
finished projects
contact us

Intelligent Technologies And Design



© 2015
Intelligent Technologies And Design

STEEL TURRETS

STE

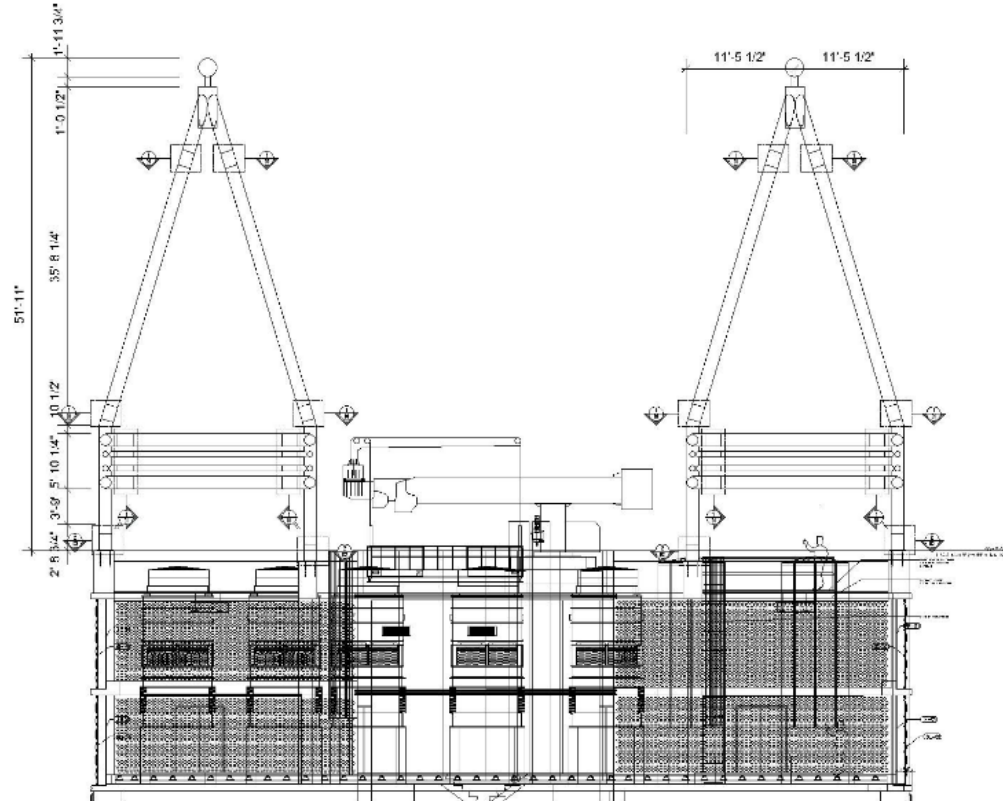
The Story of a Successful Custom Project



In New York City, look UP to see our work embedded in commercial and residential buildings.



Custom Steel Turrets Atop of the 51-Story Tower of **The Beekman** Hotel

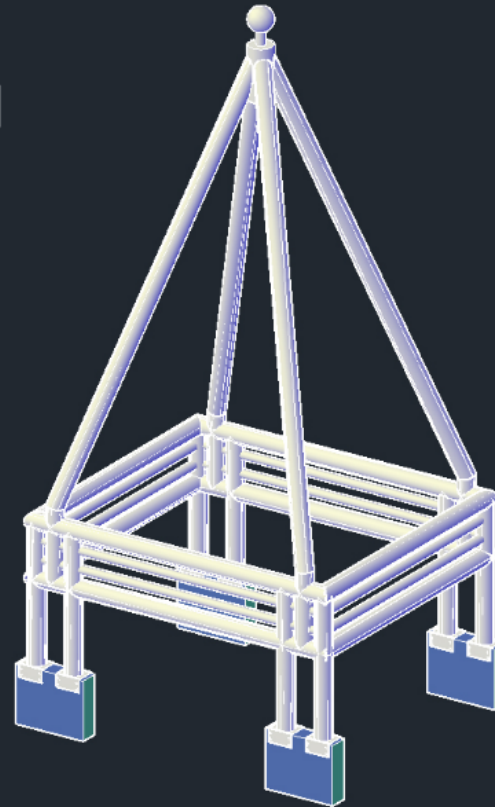


Client: **Crowne
Architectural Systems**

Results

We designed, engineered, manufactured, and delivered the custom steel turrets **in only 45 days.**

Our client received every piece of our documentation **ahead of schedule.**



The Challenge

The Investor

How can we lower the construction **price**?

Can you complete it **ahead of schedule**? We're in a rush.

The Architect

Can you make the turrets **look great**, as if they were made of just one part, with **no visible bolts** on joints?

The Installer

Can you design the modules not too big and not too small?

Can you make the turrets **easy** to assemble on-site, using **only bolts** and without welding?

Can you **manufacture** the turrets and ship them to NYC?

The Investor

How can we lower the construction **price**?

Can you complete it **ahead of schedule**? We're in a rush.

The Architect

Can you make the turrets look great, as if they were made of just one part, with no visible bolts on joints?

C
no

C
on

C
th

The Installer

Can you design the modules not too big and not too small?

Can you make the turrets easy to assemble on-site, using only bolts and without welding?

Can you manufacture the turrets and ship them to NYC?

We can!



The Challenge



The Investor

How can we lower the construction **price**?

Can you complete it **ahead of schedule**? We're in a rush.

The Architect

Can you make the turrets **look great**, as if they were made of just one part, with **no visible bolts** on joints?

The Installer

Can you design the modules **not too big and not too small**?

Can you make the turrets **easy to assemble on-site**, using only bolts and without welding?

Can you **manufacture the turrets and ship them to NYC**?

ITD Solution

6 Supervision



5 Shipping



4 Manufacturing



3 Coordination



2 Engineering

Our fabrication drawings and shop drawings had to solve **two** challenges:

Make the trusses easy to install and cost-effective to manufacture.



The trusses would stay in place.



1 Design

We can work with any system, and we'll make you choose. Or let us choose for you.

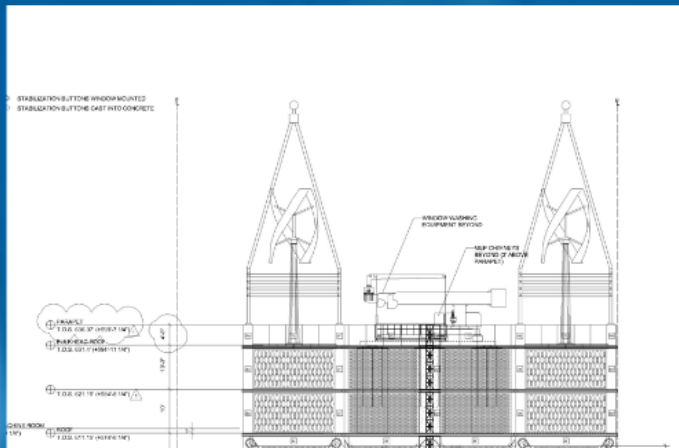


1

Design

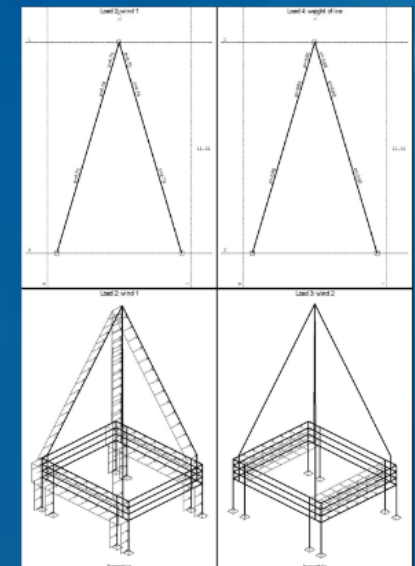
We can work with **any system, any material** you choose. Or let us choose for you.

Our client showed us this **architect's sketch** and asked us to **assist** them in designing the actual structure.

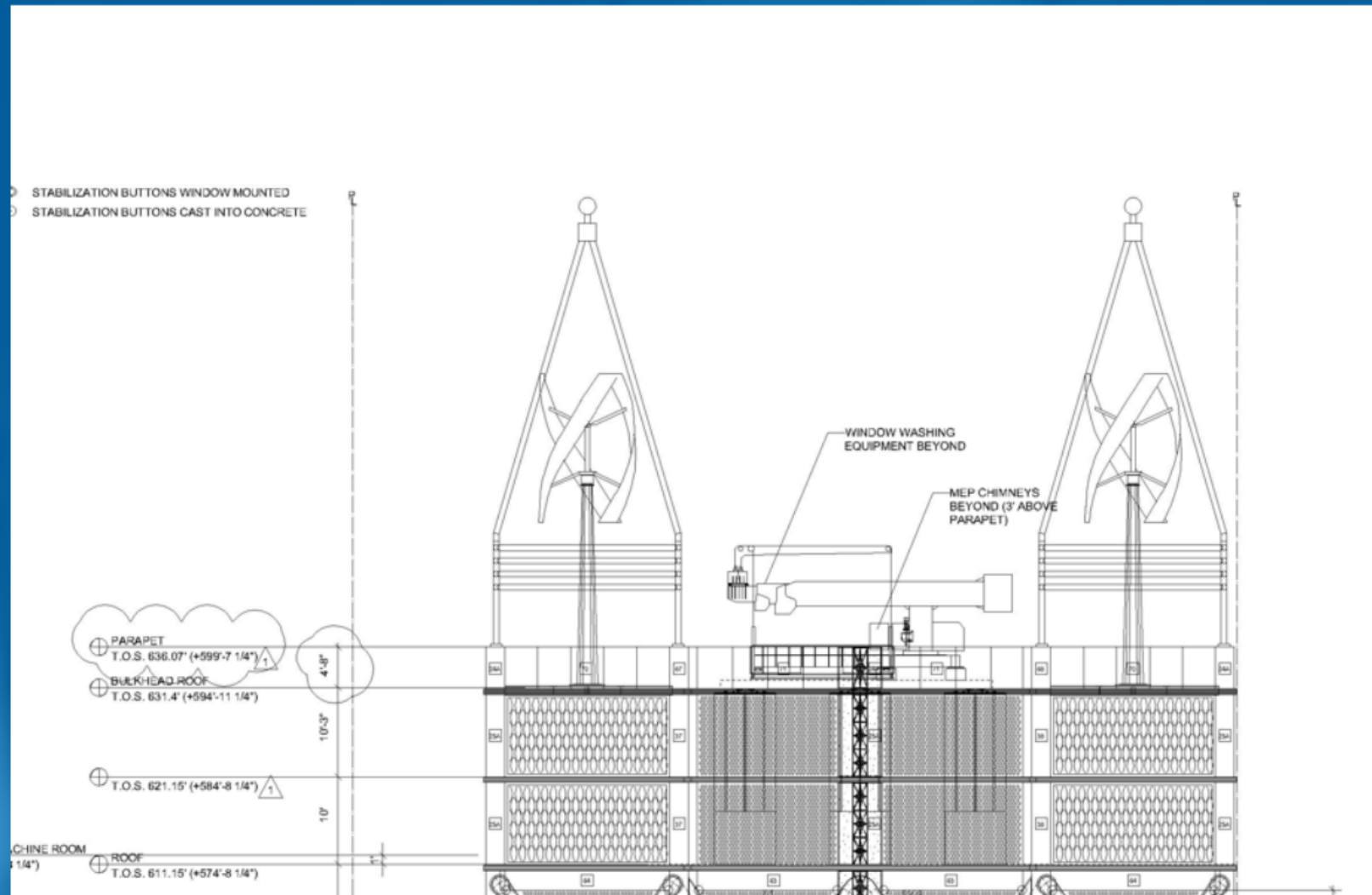


Our solution was to:

- propose **steel** as the material of choice
- **custom-design** the unique steel turrets
- provide **structural analysis** services

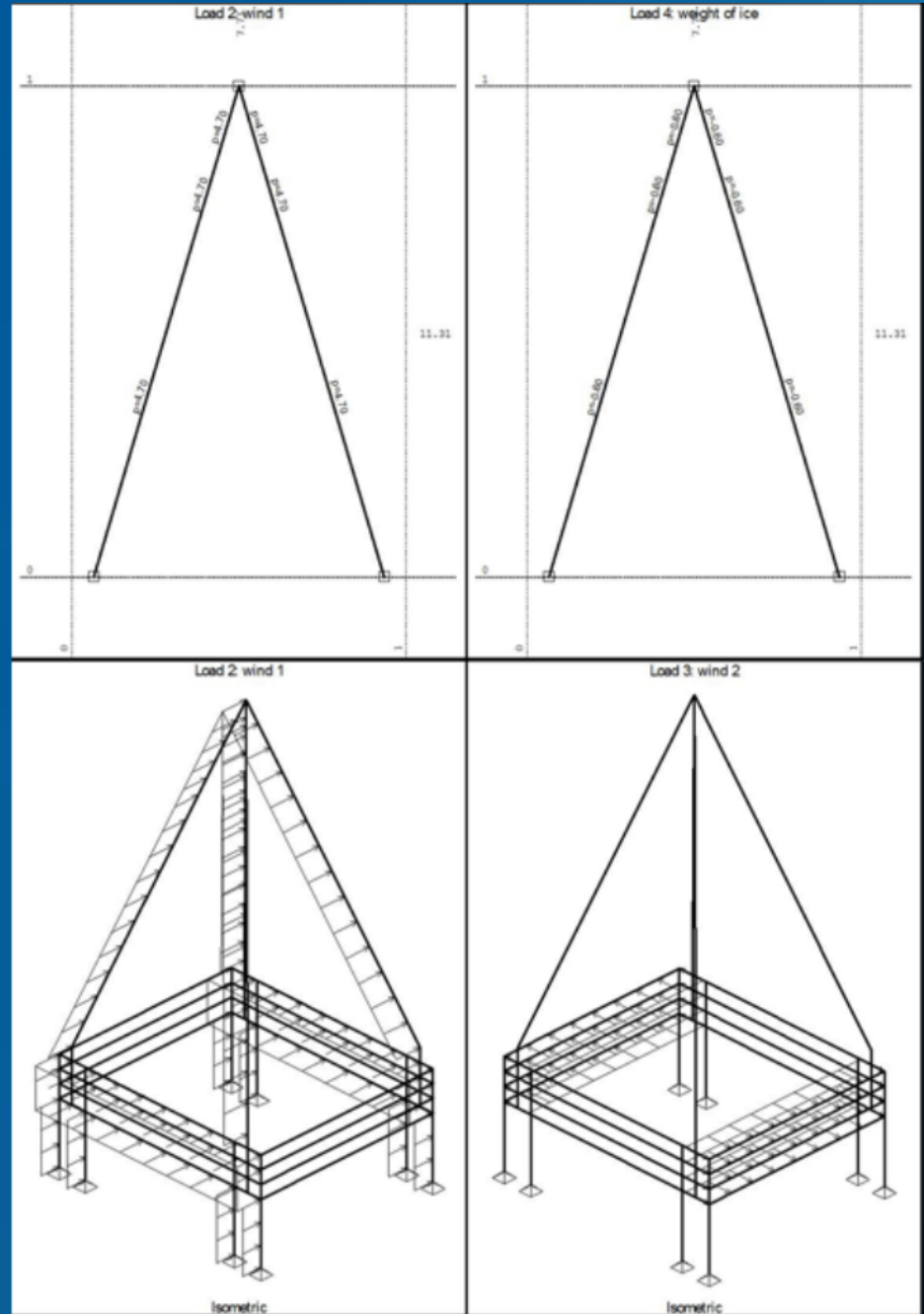
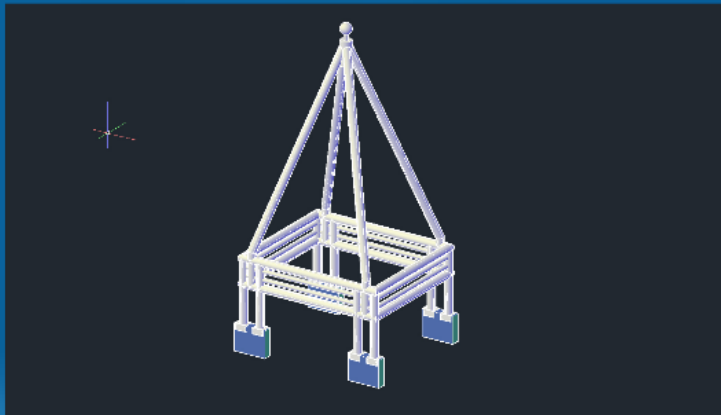


Our client showed us this **architect's sketch** and asked us to **assist** them in designing the actual structure.



Our solution was to:

- propose **steel** as the material of choice
- **custom-design** the unique steel turrets
- provide **structural analysis** services



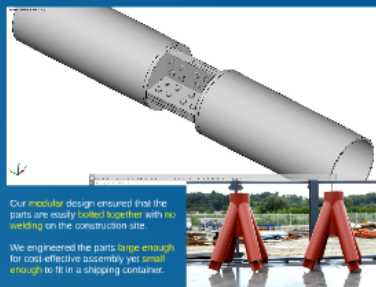
2

Engineering

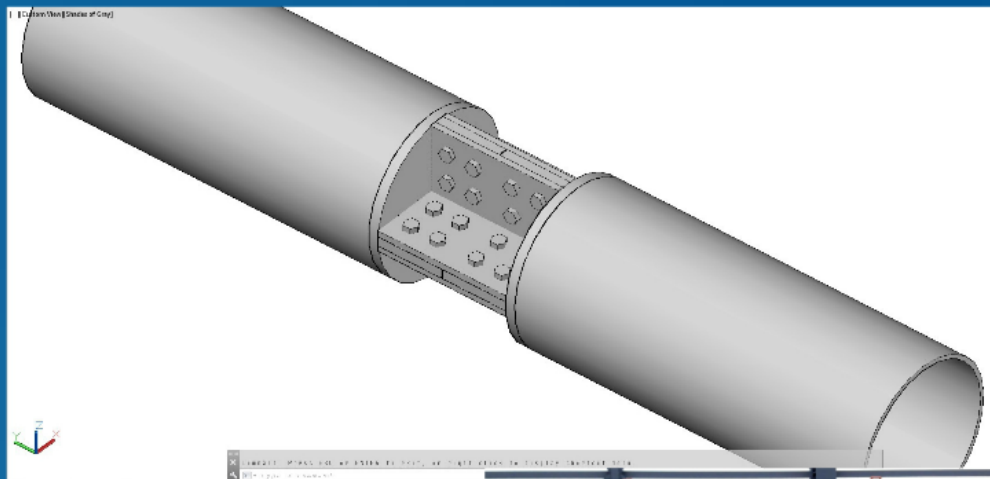
Our fabrication drawings and shop drawings had to solve **two challenges**:

Make the turrets **easy, quick and cost-effective** to assemble.

The turrets must **look great**.



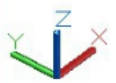
Make the turrets **easy,** **quick** and **cost-** **effective** to assemble.



Our **modular** design ensured that the parts are easily **bolted together** with **no welding** on the construction site.

We engineered the parts **large enough** for cost-effective assembly yet **small enough** to fit in a shipping container.



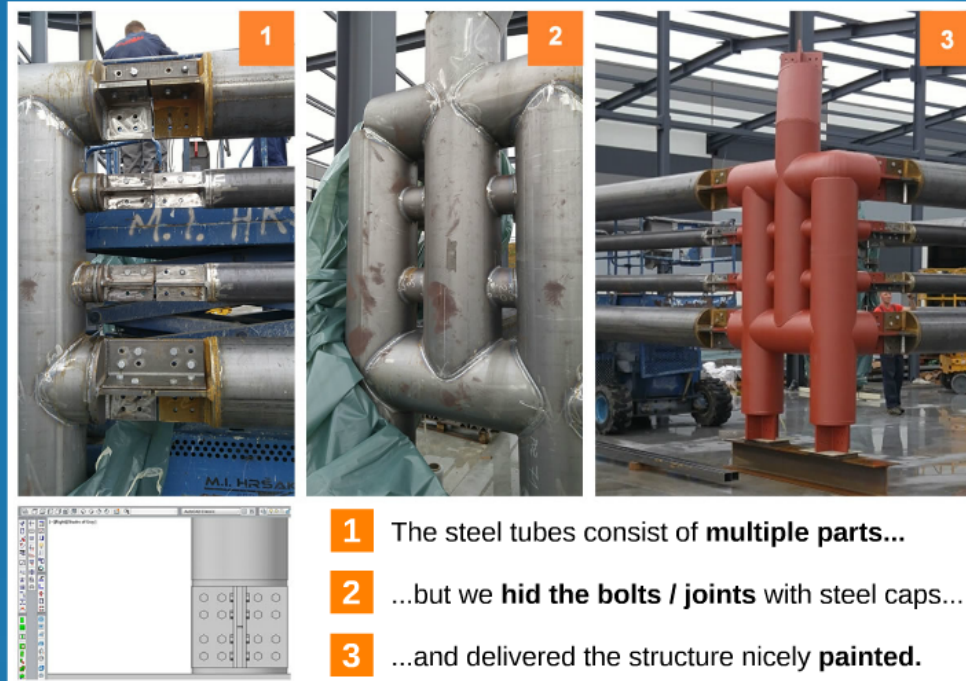


Our **modular** design ensured that the parts are easily **bolted together** with **no welding** on the construction site.

We engineered the parts **large enough** for cost-effective assembly yet **small enough** to fit in a shipping container.



The turrets must look great.

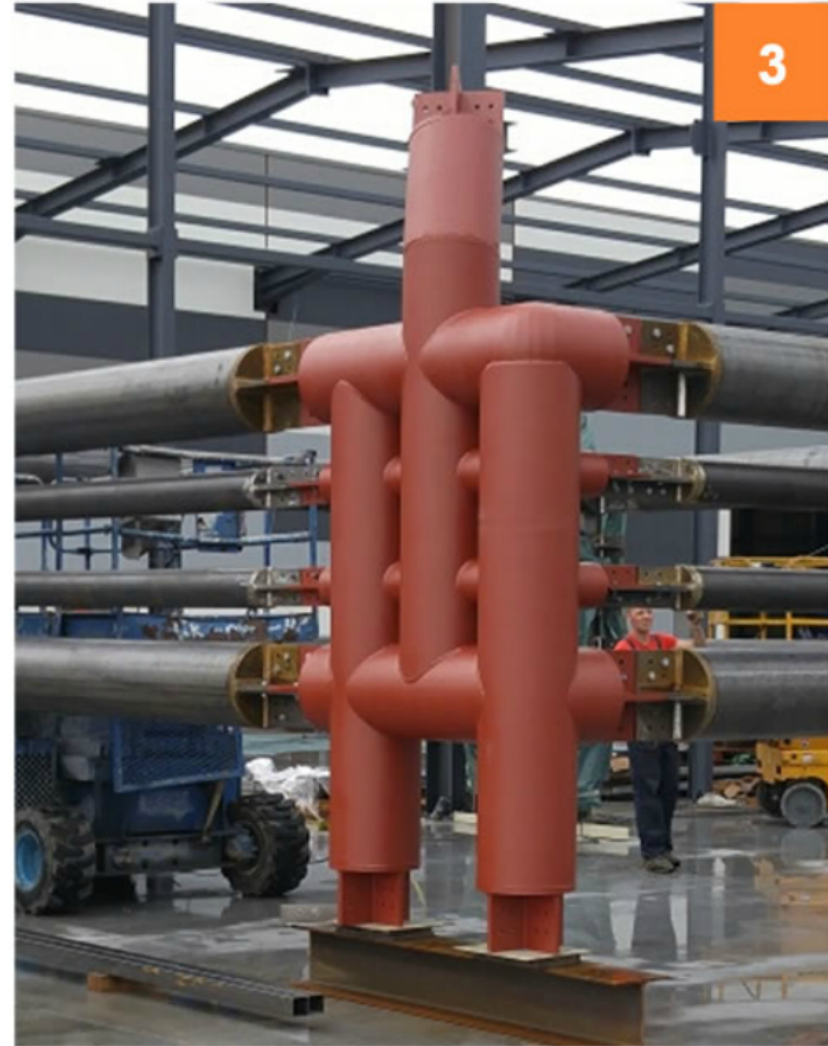




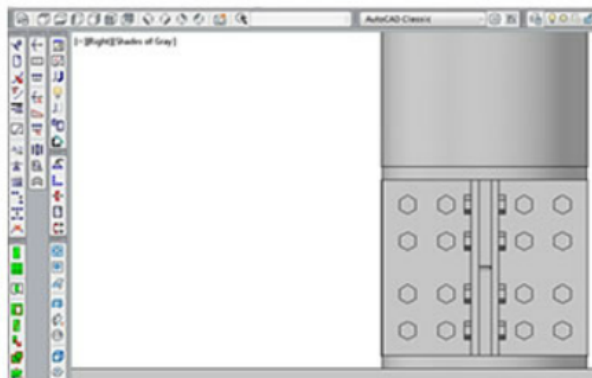
1



2



3



1

The steel tubes consist of **multiple parts...**

2

...but we **hid the bolts / joints** with steel caps...

3

...and delivered the structure nicely **paint**ed.

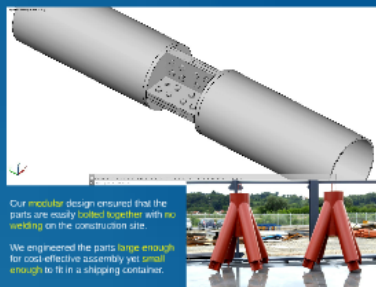
2

Engineering

Our fabrication drawings and shop drawings had to solve **two challenges**:

Make the turrets **easy, quick and cost-effective** to assemble.

The turrets must **look great**.

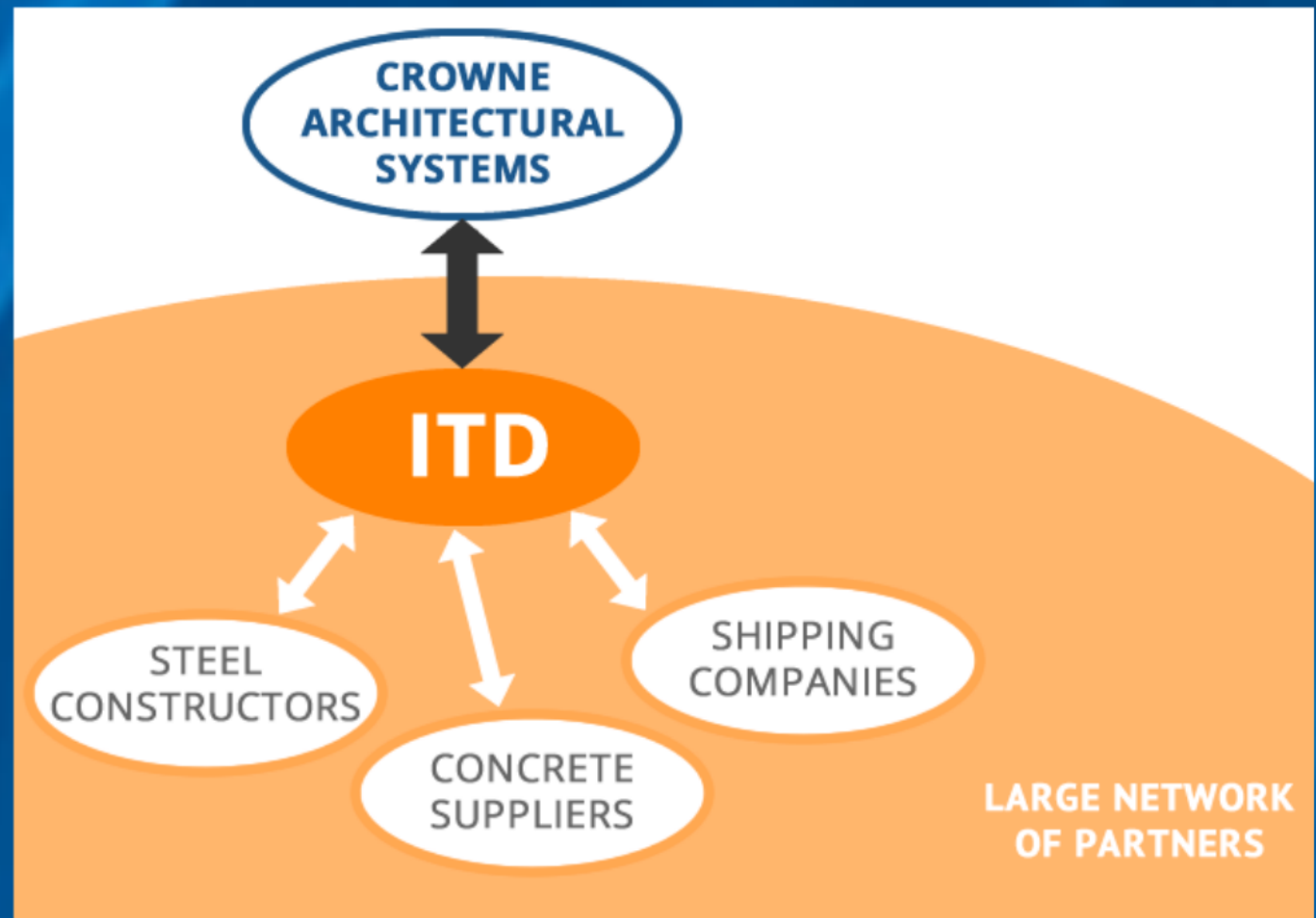


3

Coordination

Hardly any construction project would be too much for our **large network of independent professionals** that we can activate quickly.

We can do that because since 1990 we've been part of the **AluK Group**, one of the leading European brands of high quality systems for aluminium windows/doors and curtain walls.



4

Manufacturing

1. Sample Approval



Only **high quality steel** was used in manufacturing.

2. Fabricating Parts



No **welding on-site** will be needed.

3. Polishing to Perfection



No **painting** will be needed on the construction site.

Preassembling Before Shipping



That night, after having inspected the preassembly, our client slept peacefully.

1. **Sample** Approval



Only **high quality steel** was used in manufacturing.

2. Fabricating Parts



No welding on-site will be needed.

3. **Polishing** to Perfection



No painting will be needed on the construction site.

Preassembling Before Shipping



That night, after having inspected the preassembly, our client slept peacefully.

4

Manufacturing

1. Sample Approval



Only **high quality steel** was used in manufacturing.

2. Fabricating Parts



No **welding on-site** will be needed.

3. Polishing to Perfection



No **painting** will be needed on the construction site.

Preassembling Before Shipping



That night, after having inspected the preassembly, our client slept peacefully.

...and shipped the turrets from Europe to **New York City**.



"The fact that ITD completed the project in less than 45 days, including the time it takes to ship 40 tons of turrets across the Atlantic, still impresses me."

– Bruno Travalja, President of **Crowne Architectural Systems**

2 ...which we sent in 4 trucks to **Germany**...

1 In **Croatia**, we organized the loading of 40 tons of steel structures in 4 containers...

5 Shipping



2

...which we sent in 4 trucks to **Germany**...

1

In **Croatia**, we organized the loading of 40 tons of steel structures in 4 containers...

A stylized map of the Atlantic Ocean and surrounding continents. The landmasses are shown in a light tan color against a dark blue background. A yellow star with a white outline is positioned over the New York City area. A red arrow points from the top right towards the star.

...and shipped the turrets
from Europe to **New York City.**

*"The fact that ITD completed the project
in less than 45 days, including the time
it takes to ship 40 tons of turrets across
the Atlantic, still impresses me."*

~ Bruno Travalja, President of **Crowne
Architectural Systems**

6

Supervision

Two engineers who participated in constructing the turrets traveled in September 2015 to NYC for **on-site installation support**.



ITD Solution

6 Supervision



5 Shipping



4 Manufacturing



3 Coordination



2 Engineering

Our fabrication drawings and shop drawings had to solve **two** challenges:

Make the trusses easy to install and cost-effective to manufacture.



The trusses would stay in place.



1 Design

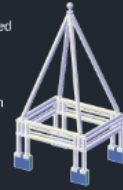
We can work with any system, and we'll make you choose. Or let us choose for you.



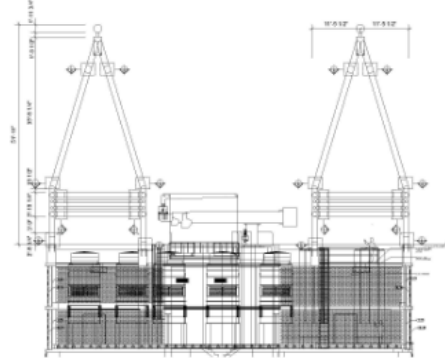
Results

We designed, engineered, manufactured, and delivered the custom steel turrets in only 45 days.

Our client received every piece of our documentation ahead of schedule.



Custom Steel Turrets Atop of the 51-Story Tower of The Beekman Hotel



Client: **Crowne Architectural Systems**

ITD Solution



The Challenge



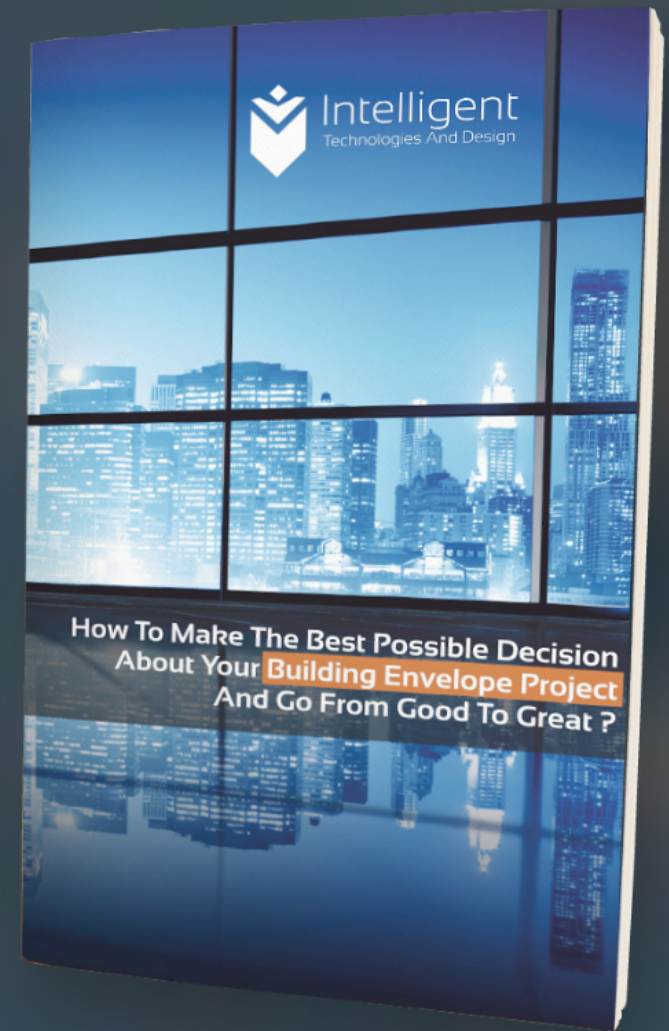
The Investor

The Architect

The Installer

View other successful projects and download our brochure on our website:

<http://www.itd.systems>



Intelligent Technologies And Design

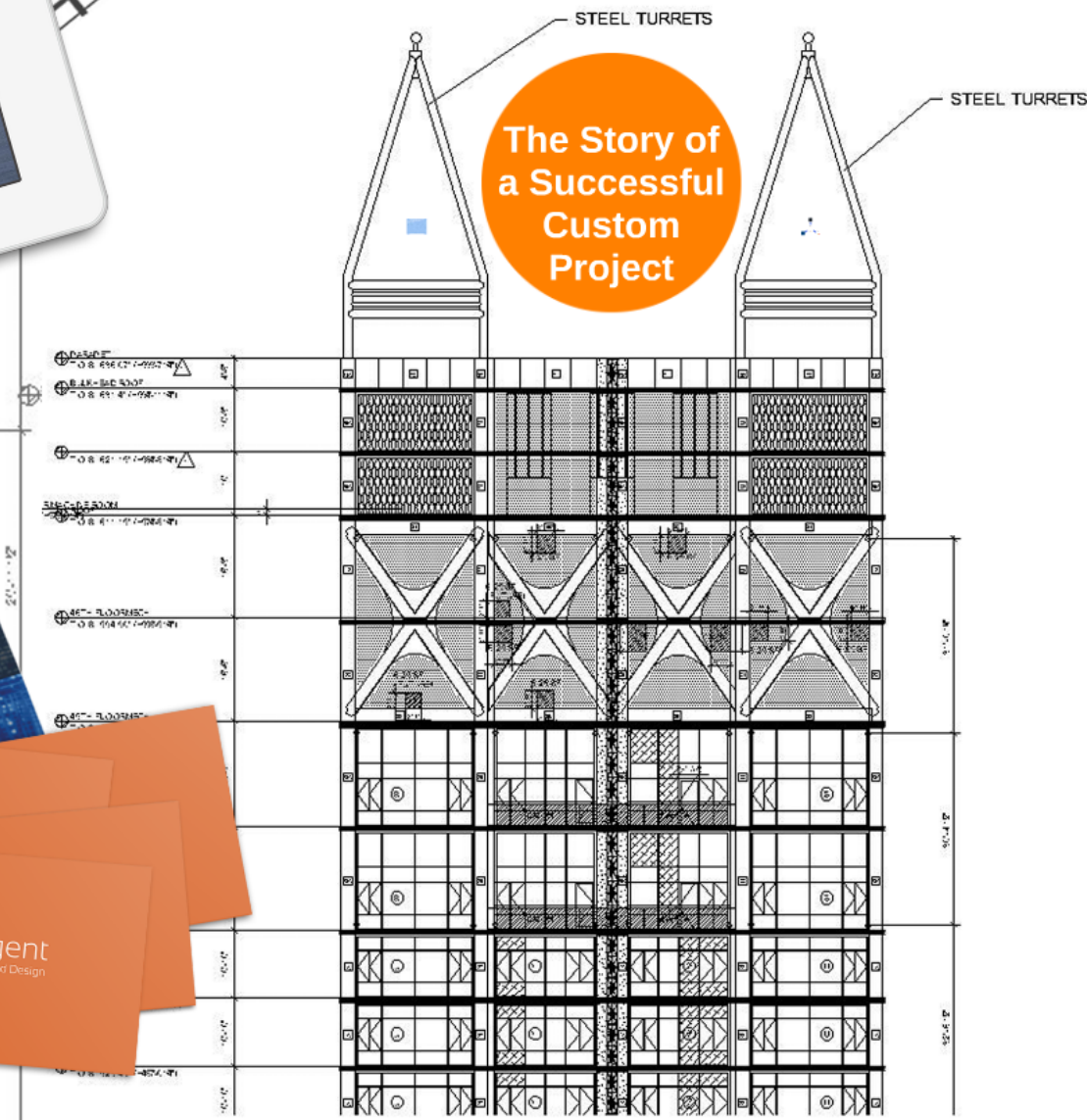
about us
services
current projects
finished projects
contact us



How To Make The Best Possible Decision About Your **Building Envelope Project** And Go From Good To Great?



The Story of a Successful Custom Project



ITD:
Custom Solutions
Fast Delivery
Competitive Prices





***What is the most important thing
about building envelope projects
for you?***

**Phone: +385 99 241 4885
Email: info@itd.systems
Web: www.itd.systems**

**Intelligent Technologies And Design Ltd.
Istarska 79, 51000 Rijeka
Croatia, EU**